

## Addendum to Manual



## Networking

The Penn Elcom CaseDesigner is completely networkable from version 1.0.0.6 on. The following Quick Guide shows the simple installation and implementation.

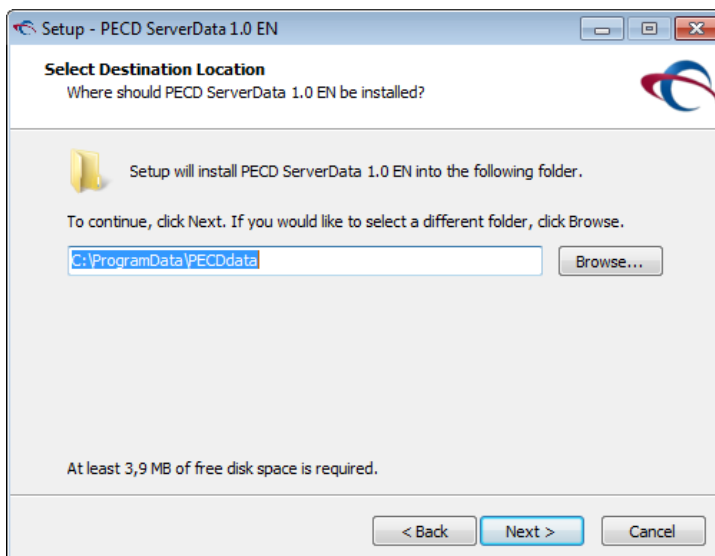
## Installation

The Penn Elcom CaseDesigner will always be locally installed on a computer and enabled. In order to use this software with multiple computer access on a common database, some additional files need to be installed on the Server. For this purpose there is a separate server installer required, contact Penn Elcom sales to request these files. After the download is complete, start the program to install the server files.

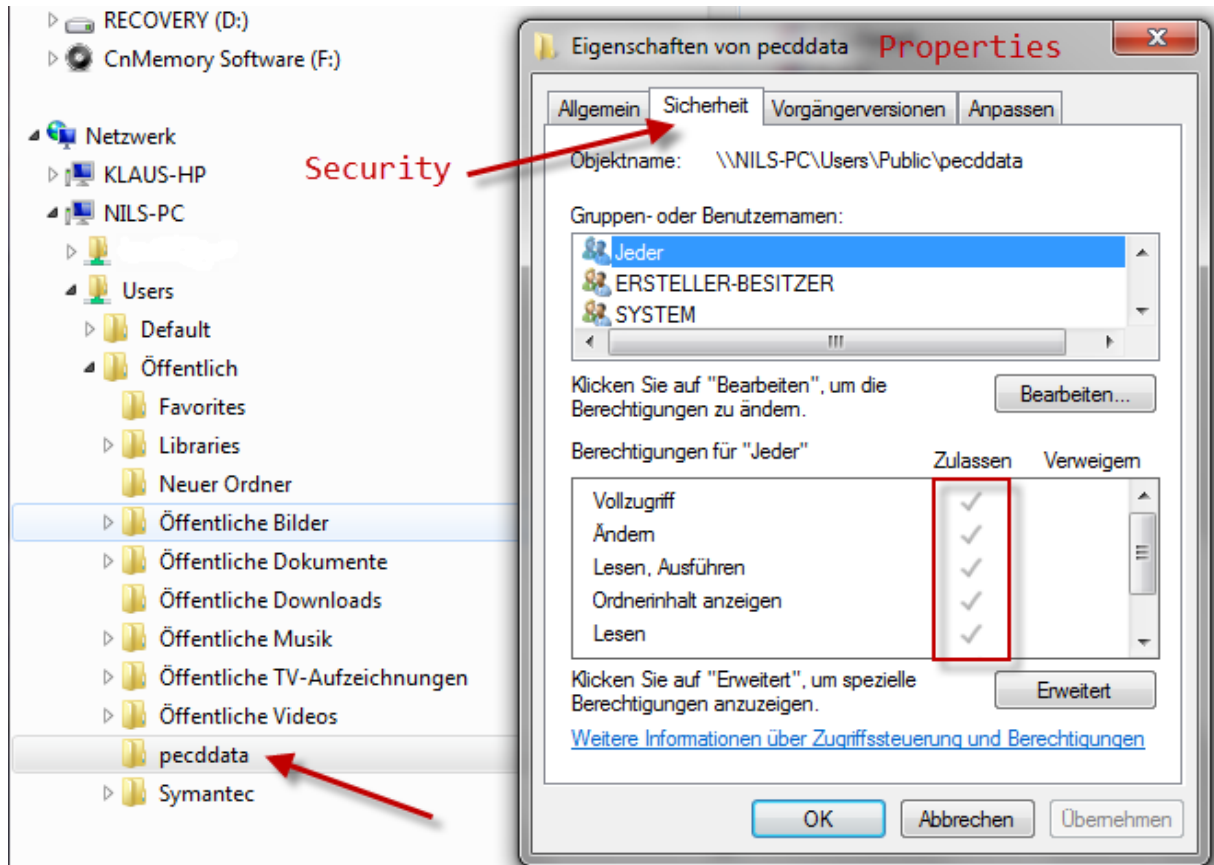


Select a folder on your server, that is network accessible to multiple users. An example is:

**C:\ProgramData\PECDdata** or **C:\users\Public\PECDdata** (usable on multiple Windows versions)



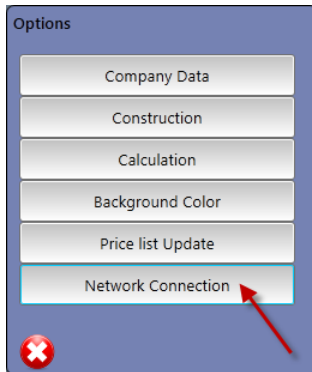
Complete the installation process, then open the file manager. Under Networking you will see your computer on the network. Select the directory in which you have installed the server files. Right click, Open Properties of the directory. Enable read and write for the selected user, an example:



Click Apply and then click the OK button and data access will be granted to selected or all users (depending on your network). This setup is applicable to small LAN's or larger scale Domain-type servers.

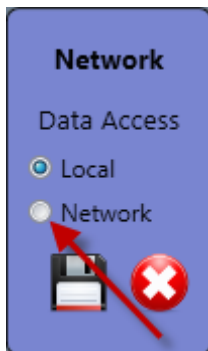
## Using the Network

The Program provides access to the network data through the PECD client. After the initial installation of CaseDesigner, the pointer is set to the local databases. In order to share common data on the network that is accessible, click the **Options menu** and select **network connection**.

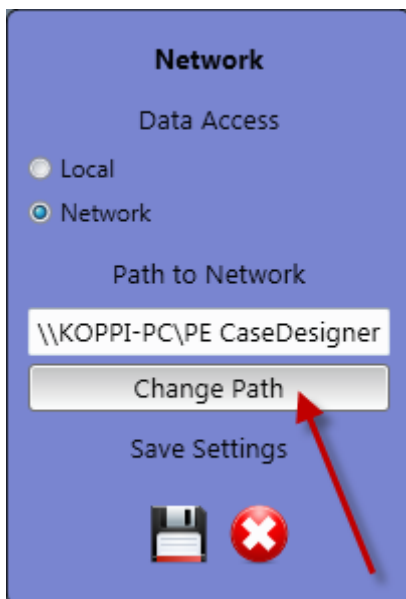


This opens the following dialogue, which shows local Data help topics.

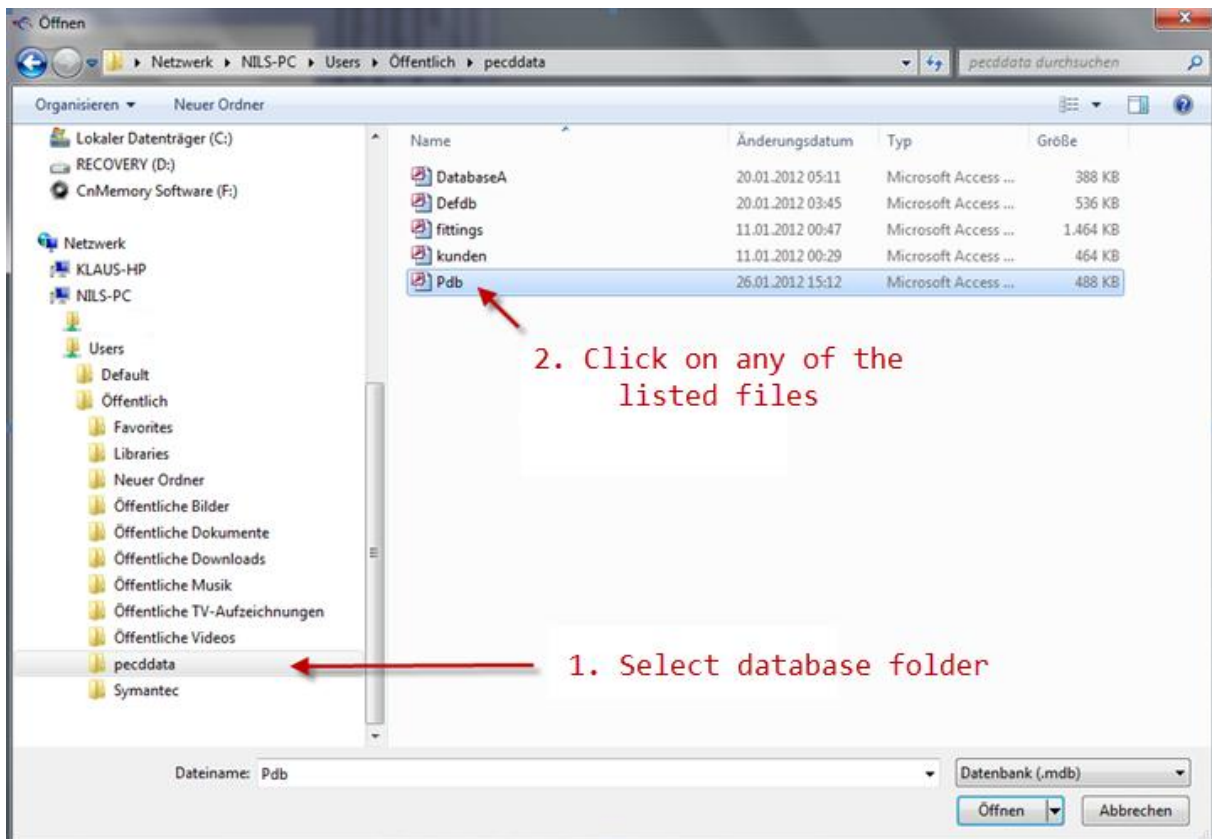
Change the setting from Local to Network.



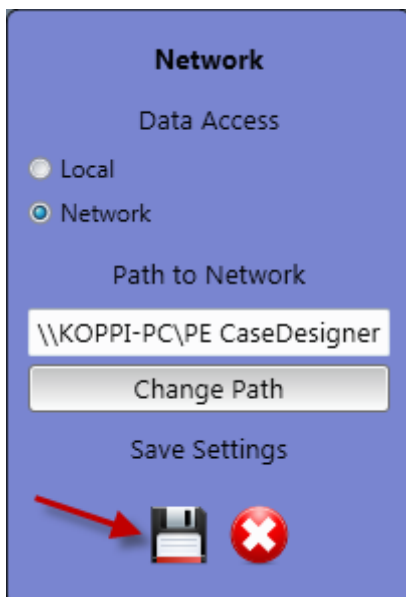
Now you have access to network data. In the next step, select "Path", in order to change identify the path to your data files (below is an example).



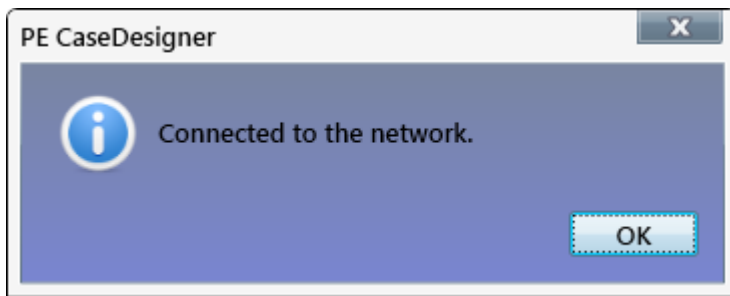
Now a window opens identifying the path to your directory and data files.



As the last step, CaseDesigner asks whether you want to accept the entries. If you click on the Diskette, the path will be saved on your Computer. This ends the program.

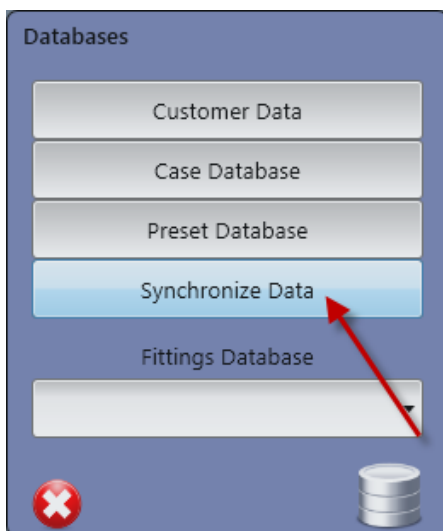


After a Restart, the program will display a successful network connection, click OK.



## Network Disconnect

You can use the Penn Elcom CaseDesigner if you are separated from the Network, for example if you take your Notebook along to a customer site. In this case there is a function available with which you can simply access all data from your network and transfer it to your local Computer. Open the DATABASE icon and Click Synchronize Data.

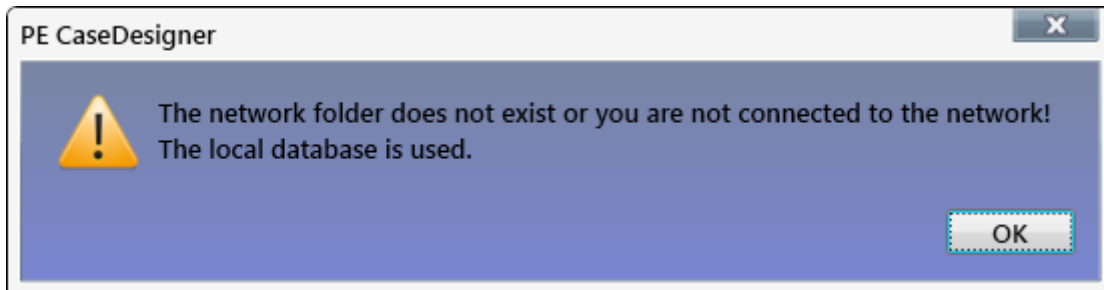


A Password will be required to access data over your network (providing an optional Password has been set up previously)

You will receive a confirmation message at the end of the remote access Transfer.

## Auto Connect/Reconnect

If your Computer has been setup to the Network mode, and gets disconnected, it will automatically attempt to reconnect to the data path/source setup previously. If no connection is available, the program automatically reverts to the local database.

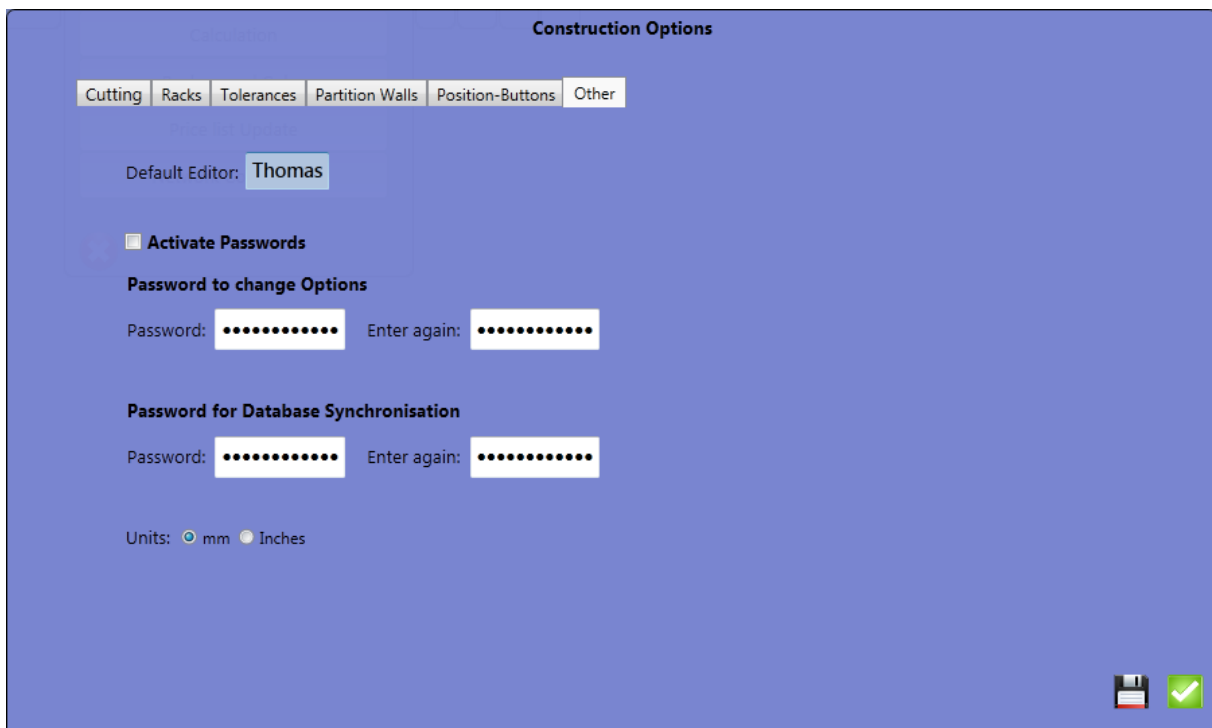


**Tip:** It's simpler to save/restore data and back up externally to the device used and just update the network data from the backup device. See other hints in the Manual.

## Password Changes

For improved security, two password options are available to secure your data files for Penn Elcom CaseDesigner. To install passwords for select users and files, select this option from the following Menu: **Options/ Construction Options/Other**.

The first password the following files from access: CompanyData, Construction, Calculation and Pricelistupdate. The second psw is available for the Data Synchronization option.



Set the respective Parameters according to your Security Needs.